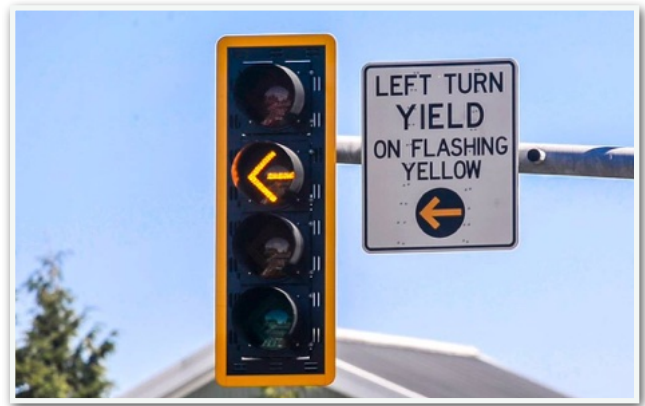


Flashing Yellow Arrow Traffic Signal

WHAT IS IT?

Flashing yellow arrow traffic signals feature a flashing yellow arrow in addition to the standard red, yellow and green arrows. When illuminated, the flashing yellow arrow allows waiting motorists to make a left-hand turn after yielding to oncoming traffic. Otherwise, the new traffic signals work the same as traditional signals.



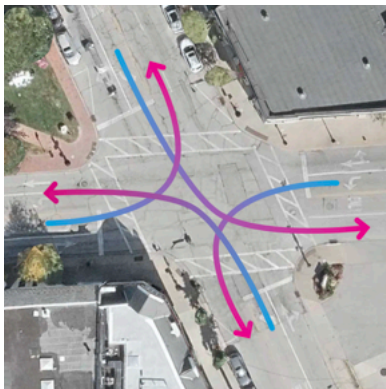
WHY IS IT IMPORTANT?

The Federal Highway Administration (FHWA) has adopted the flashing yellow left-turn arrow as a national standard.

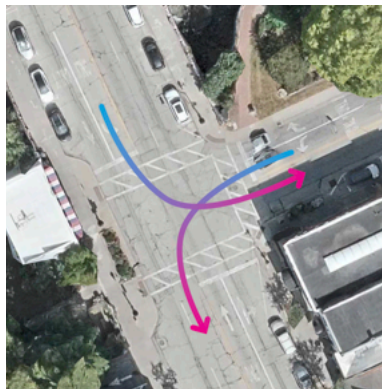
FYA signals are thought to be a more intuitive indication to drivers that they can proceed with a left turn as traffic allows.

FYA signals increase safety – according to national data, they can reduce left-turn crashes as much as 20%.

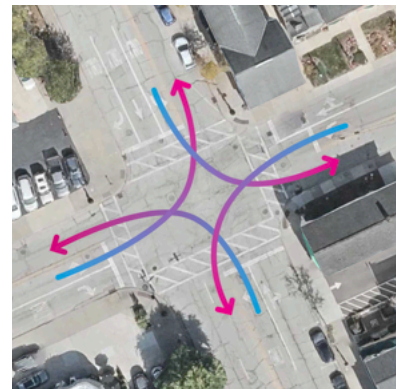
WHERE IS IT APPLICABLE?



- Washington east/north to Main
- Main south/east to Washington
- Washington west/south to Main
- Main north/west to Washington



- Main south/east to Bell
- Bell west/south to Main



- Orange east/north to Main
- Main south/east to Orange
- Orange west/south to Main
- Main north/west to Orange